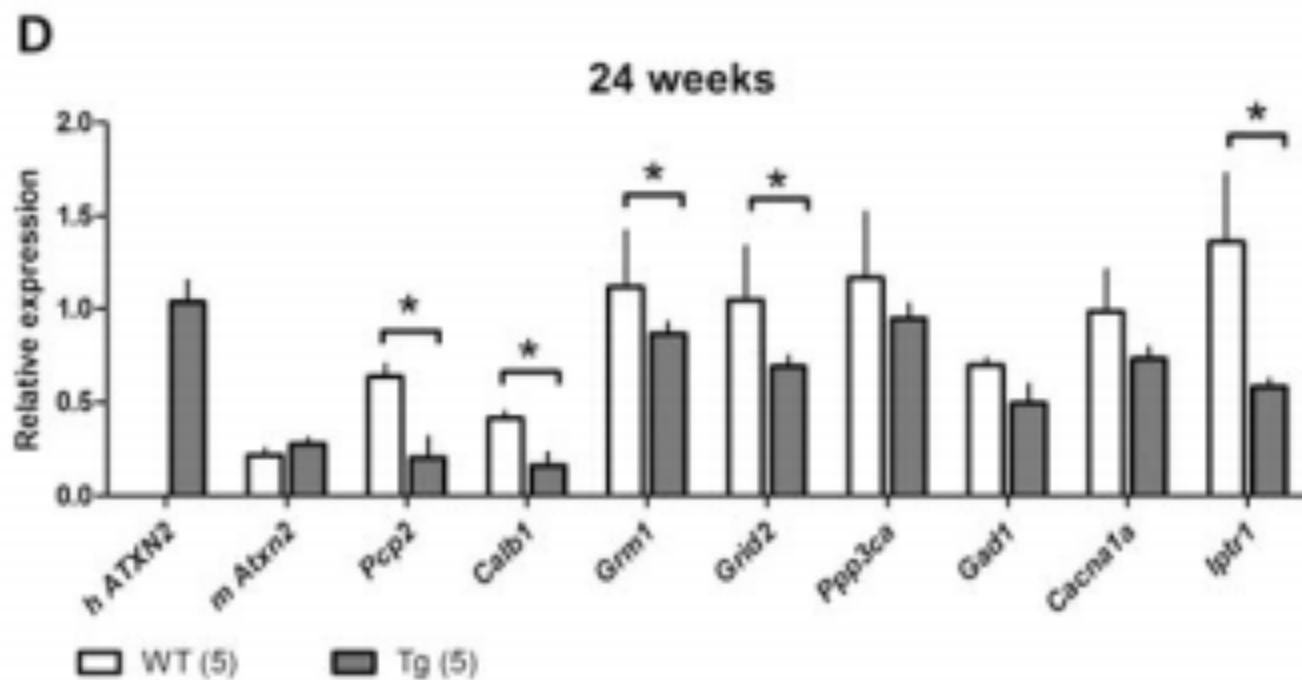
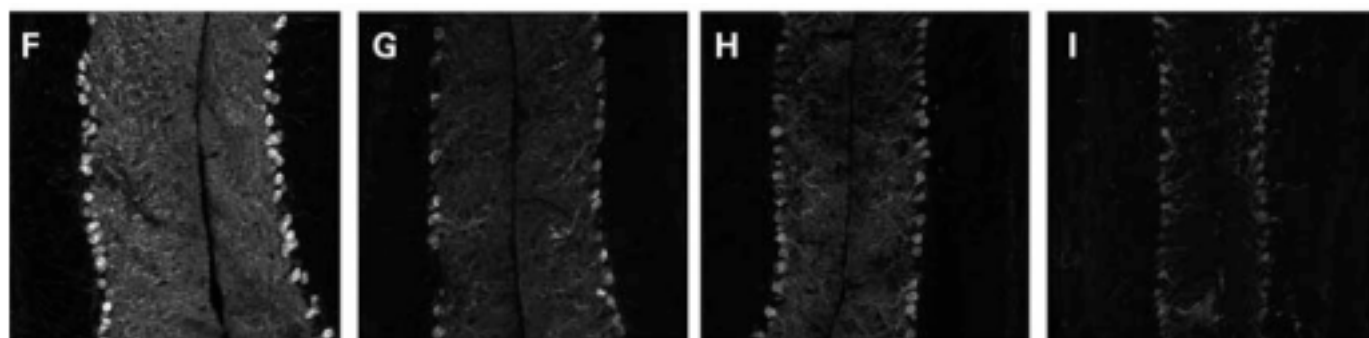


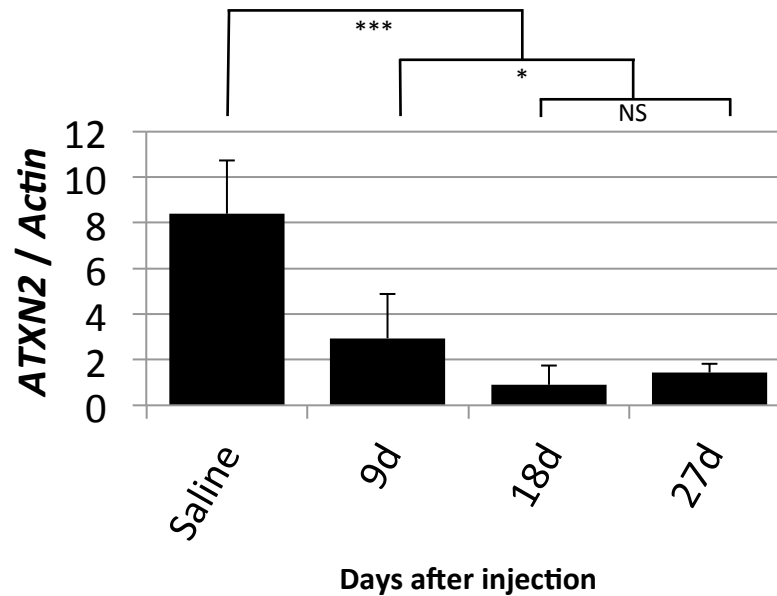
Lab meeting

Dan

Aug 23, 2013



Timecourse study - 40-2 hybrid line
 Injected with 200 µg ASO 133
 5.7 µl of 35 µl/ml ASO.



*** P<0.001

** P<0.05

NS P>0.05

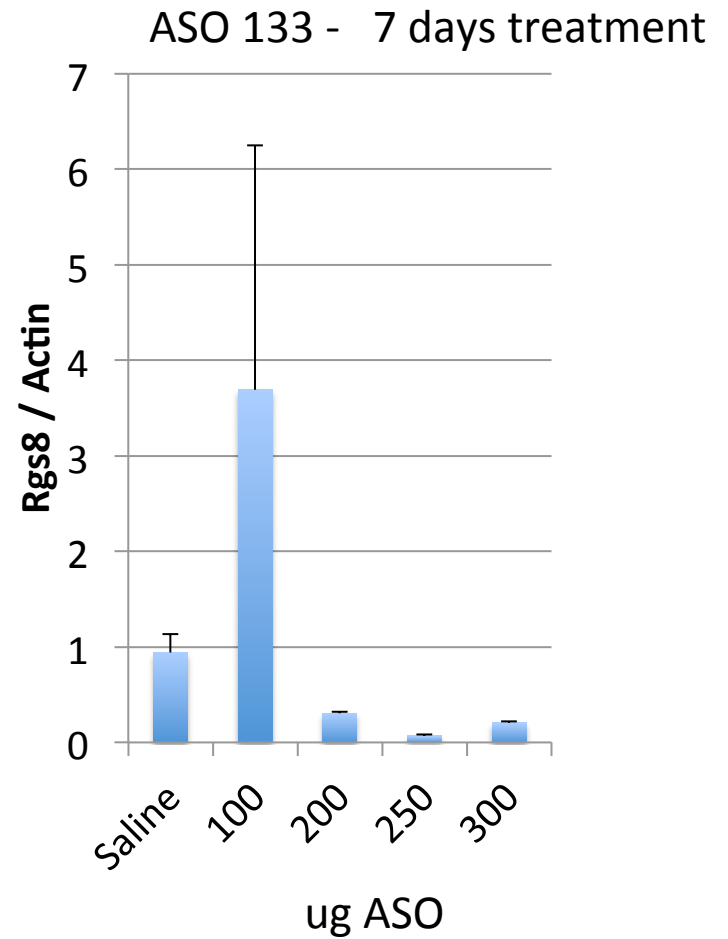
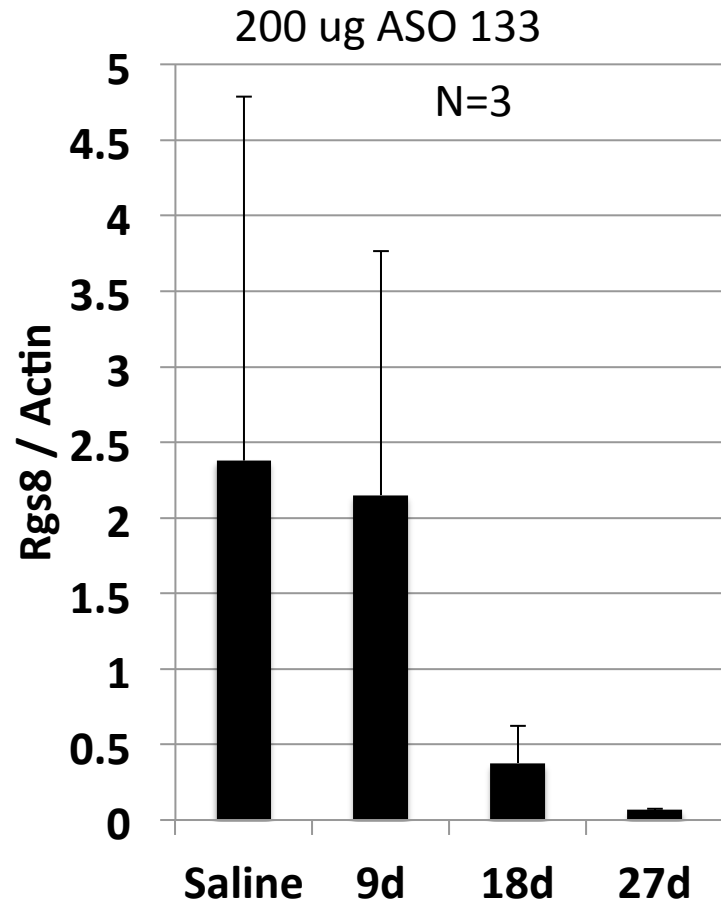
N=3

P<0.0001

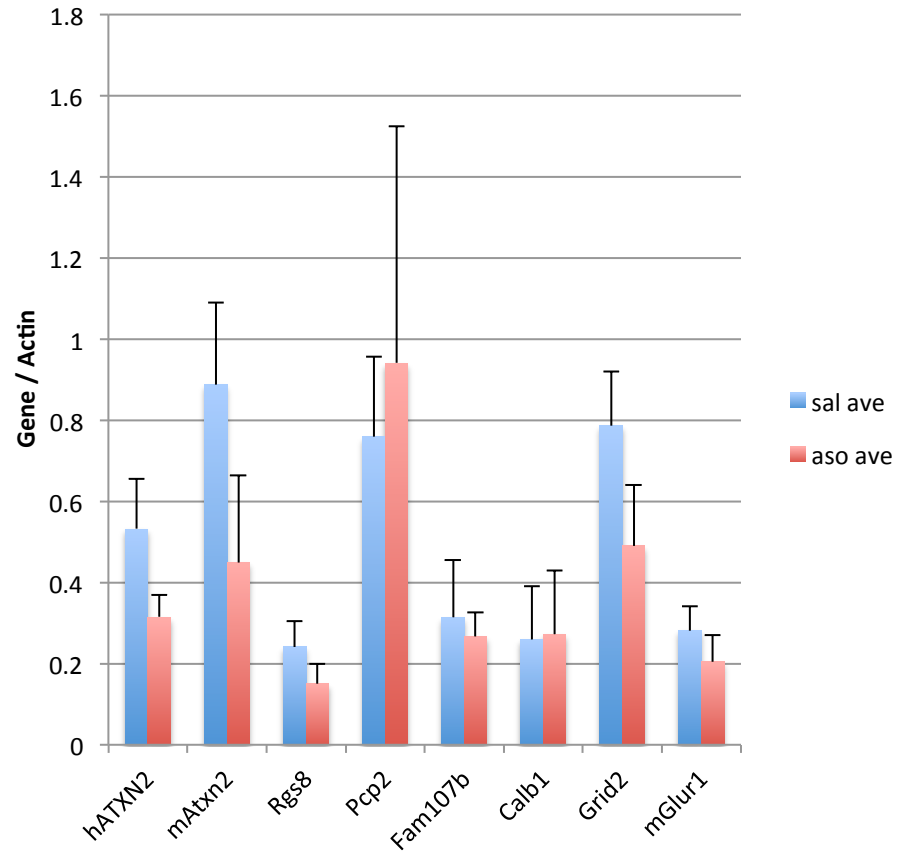
Repeated Measures ANOVA

Bonferroni's Multiple Comparison Test	Mean Diff.	t	P value	95% CI of diff
Saline vs 9d	5.450	14.65	P < 0.001	4.012 to 6.887
Saline vs 18d	7.501	20.16	P < 0.001	6.064 to 8.939
Saline vs 27d	6.967	18.73	P < 0.001	5.530 to 8.404
9d vs 18d	2.052	5.515	P < 0.01	0.6145 to 3.489
9d vs 27d	1.518	4.079	P < 0.05	0.08037 to 2.955
18d vs 27d	-0.5341	1.436	P > 0.05	-1.971 to 0.9032

Rgs8 is reduced



m104-m109



41.65 ug ASO133 injected per mouse

N=3 saline or 3 ASO mice

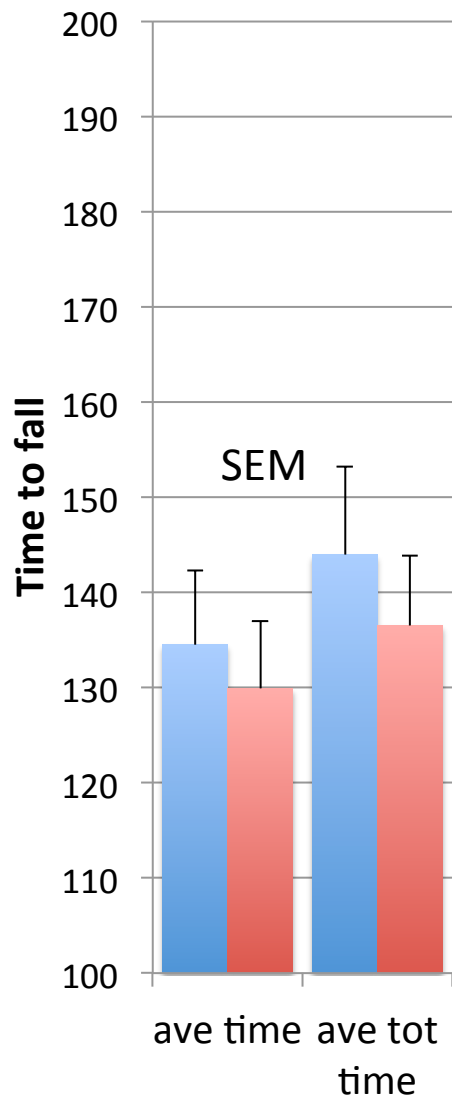
Age=7 weeks

Time of treatment =7 weeks

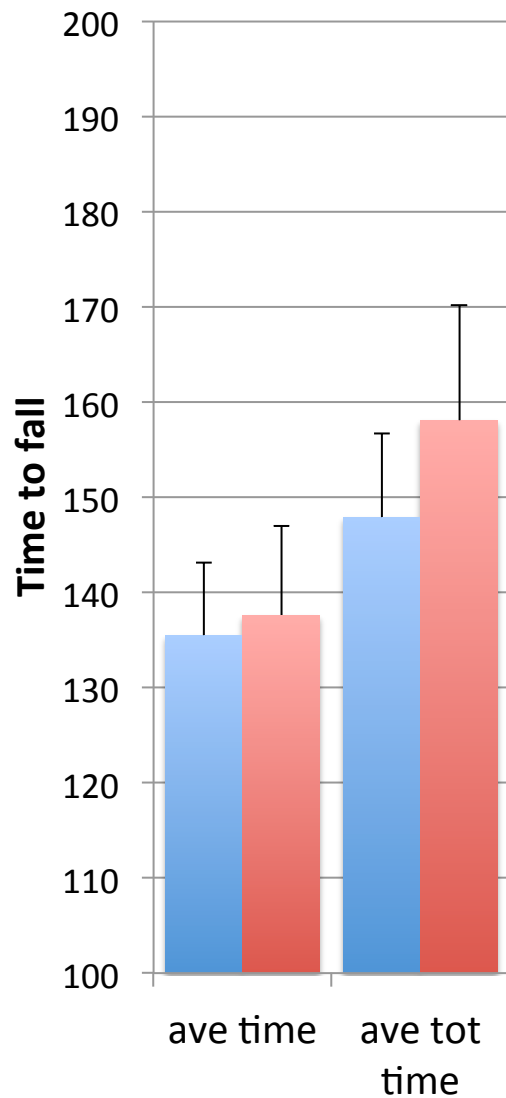
Rotarod Line 40-2 (Q127) B6-D2 hybrid background - 6 wks age

N=21 tg N=16 wt

Day 1



Day 2



Day 3

