

A2RP [ATXN2-LP] Rabbit pAB characterization

A2RP [ATXN2-LP] Rabbit pAB

A2RP-A [Ab1][2865.1] [2]

A2RP-A amino acids **249–264**, RKASEPAGGPRREDIVD
[Not good Ab????]

A2RP-B [Ab2][2865][1]

A2RP-B amino acids **823–840**, PGQQGKYRGAKGSKPPQR
[Good and show specificity]

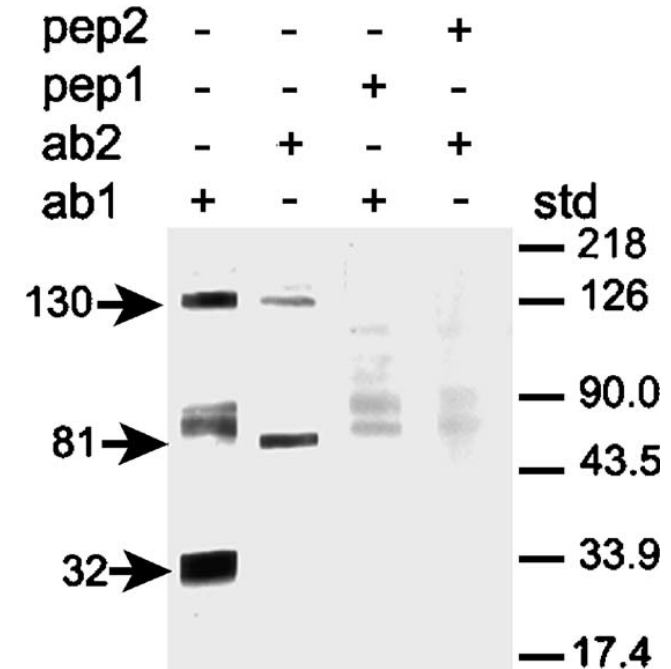
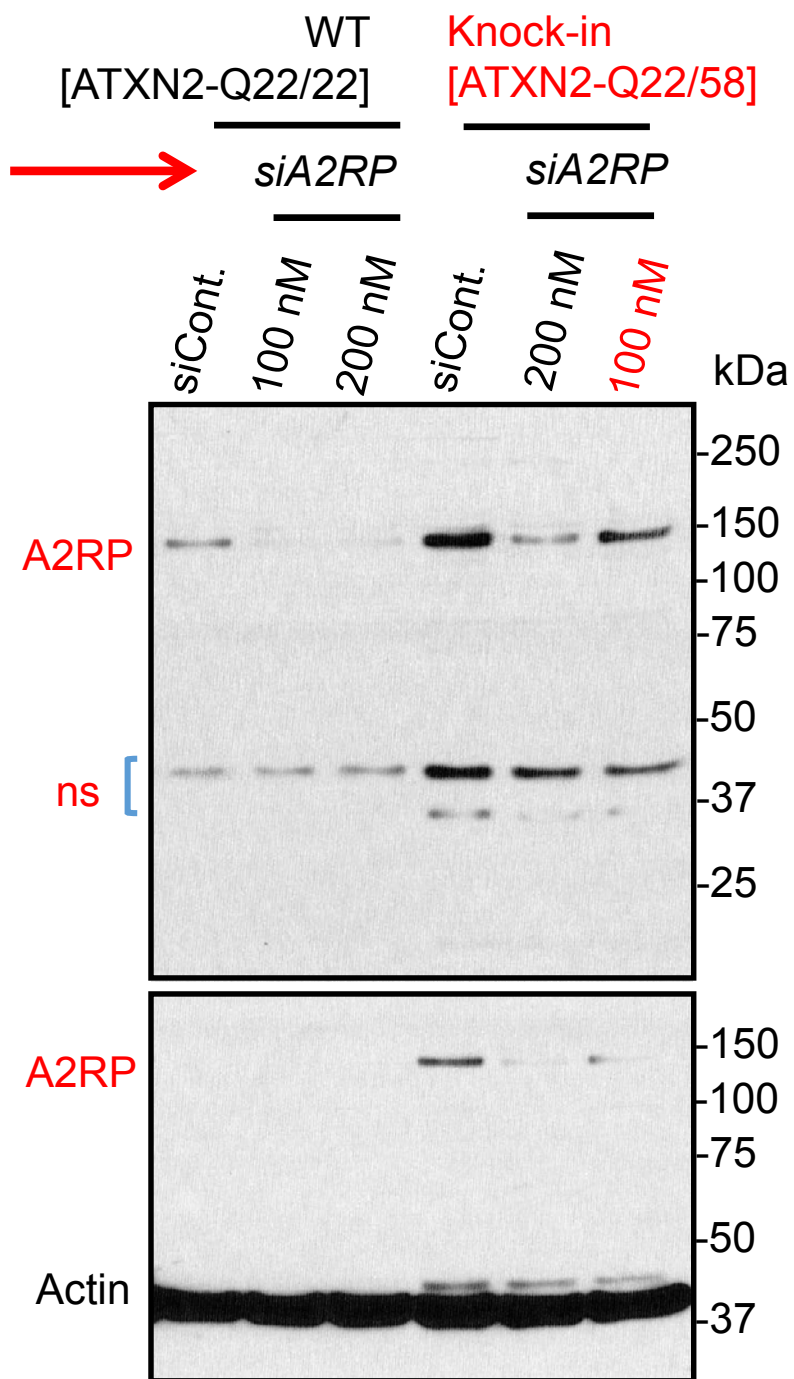
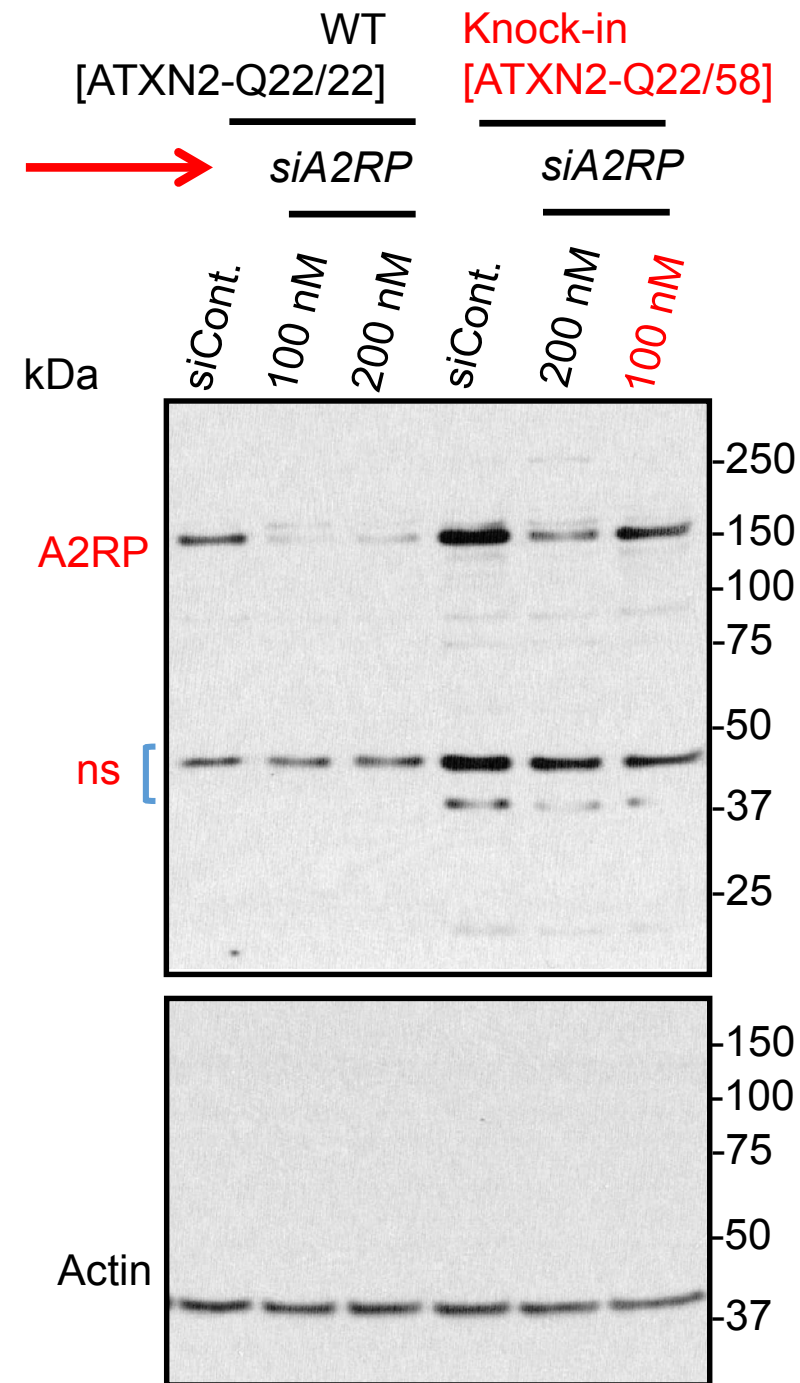
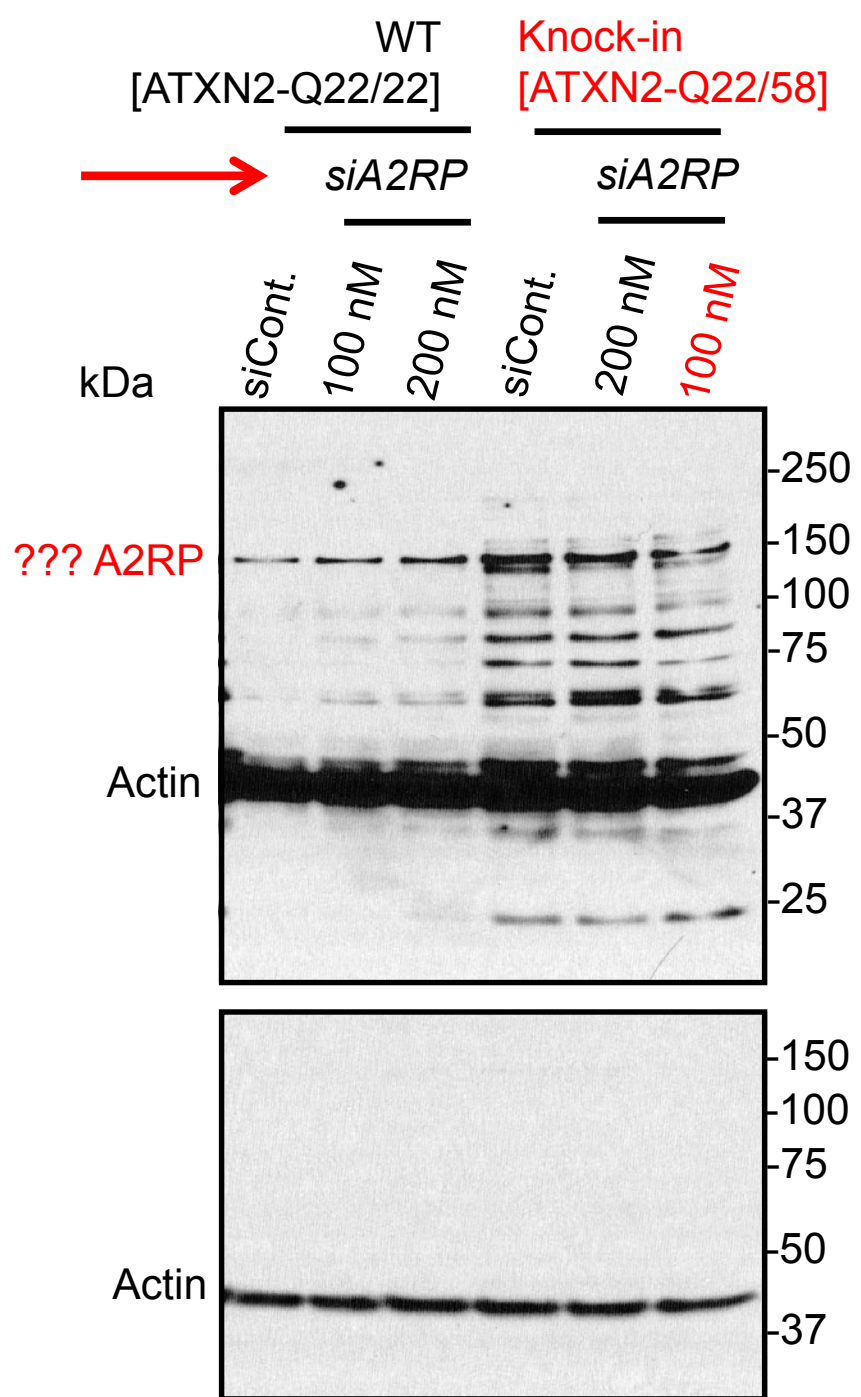


Fig. 5. Western blot. Protein extracts of mouse brain (100 ug) were loaded in each lane. Lane 1: was detected with anti-A2RP antiserum (**Ab1**); lane 2: was detected with anti-A2RP antiserum (**Ab2**). Lane 3: Ab1 was preabsorbed with peptide 1; lane 4: Ab2 was preabsorbed with peptide 2.



WB: A2RP-B [Ab2][2865] [1]
& Actin Abs
siCont. RNA: 200 nM
[Good Ab and shows specificity]





WB: A2RP-A [Ab1][2865.1] [2]
& Actin Abs

[Not good Ab????]