

"Boss is coming! Discover something!"

- Immunohistochemistry:
 - Problem: erratic detection of ataxin 2s
 - Solution:
 - Concentration response curve
all AB
 - Longer blocking time
 - Change blocking agent
 - NGS→skim milk

Methods

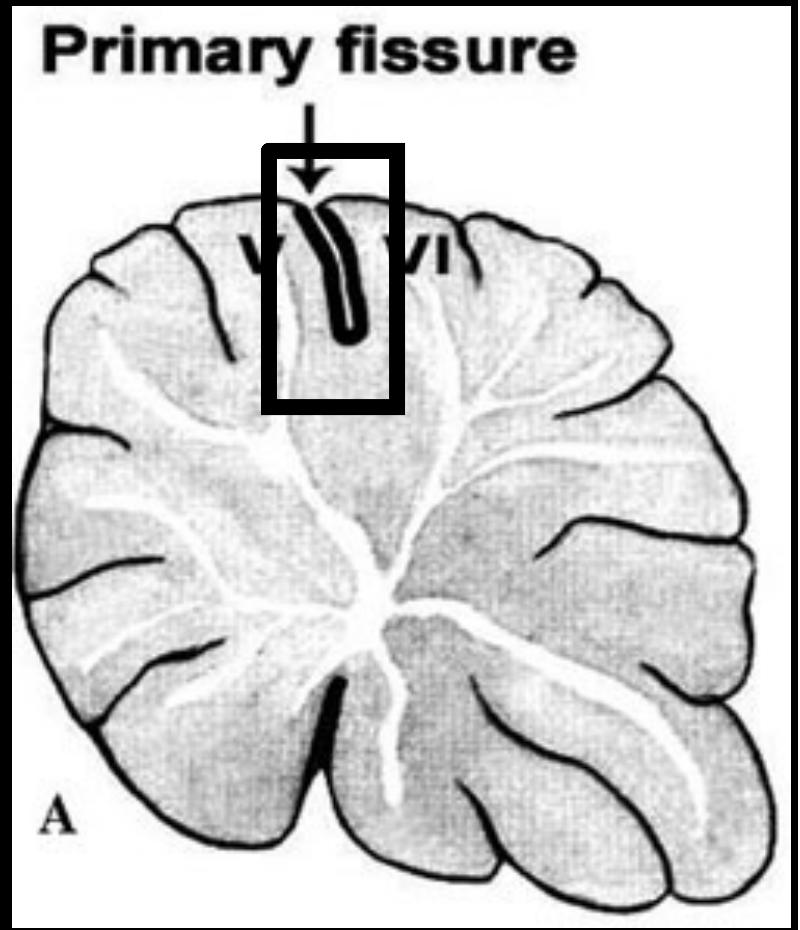
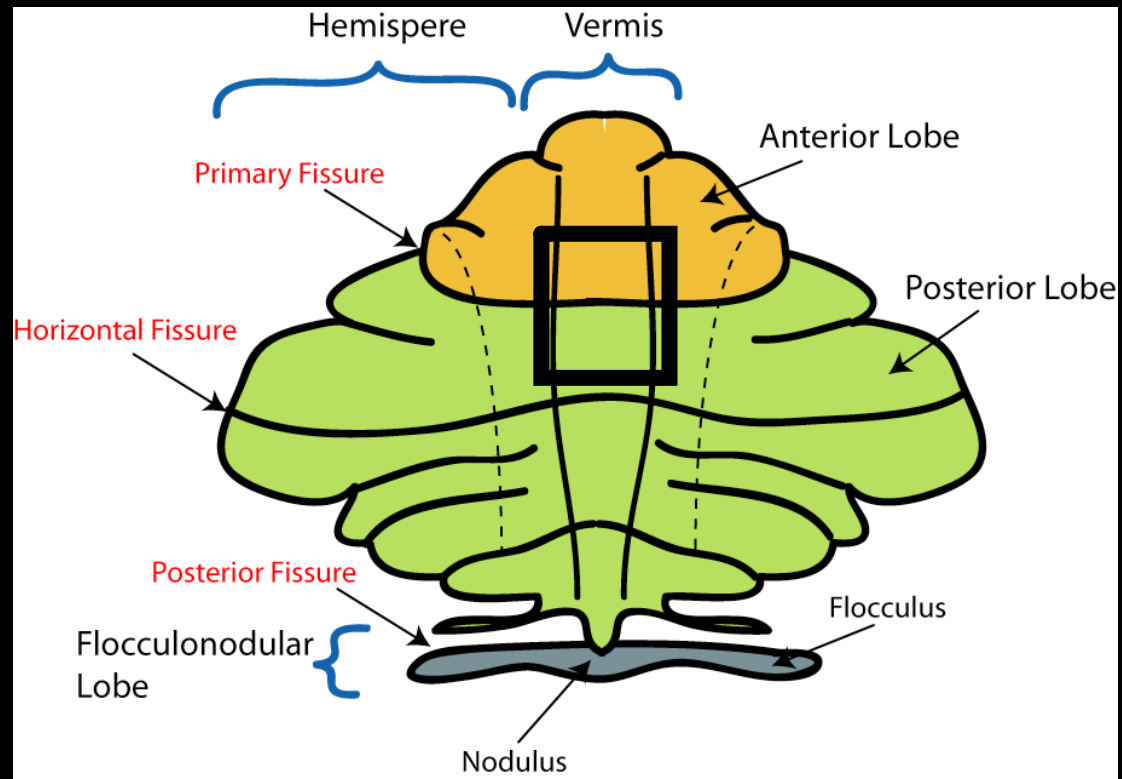
- 20 μ M brain sections
38-13 and B6 sliced and stained together
- 1x PBS: wash 3x @ 10min
- Permeabilize and block **overnight** @ RT
- Primary antibody 24hrs @ 4c
- Wash 3x @ 15min with wash buffer
- Secondary antibody 2hrs @ RT
- Wash 3x @ 15min with wash buffer

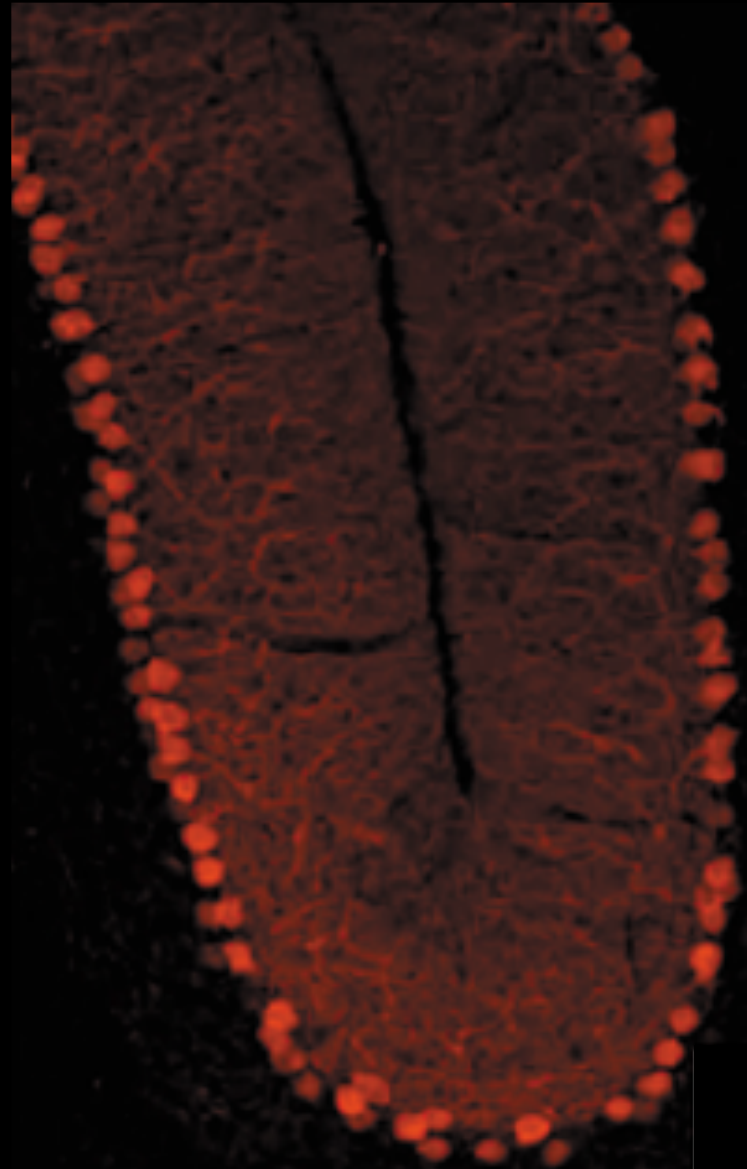
Solutions:

- Permeabilization & blocking buffer: 0.3% Triton in 1x PBS with 5% skim milk
- Wash buffer: 0.1% Triton in 1x PBS with 1% skim milk
- AB solution: 0.1% Triton in 1x PBs with 5% skim milk
- Slide fixative media: Prolong Gold

Camera

- Camera settings optimized
 - Control: secondary AB only
 - All settings remain constant across session
 - Exposure time: 3s
 - Gain: 2.0
 - Black level: 335
 - Gamma level: 1.0
 - White level: 3350

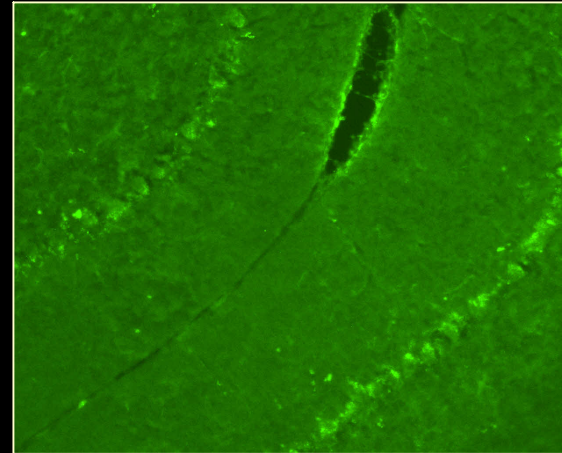
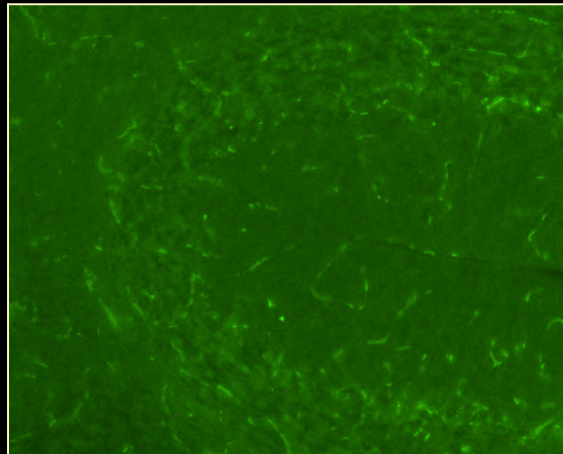




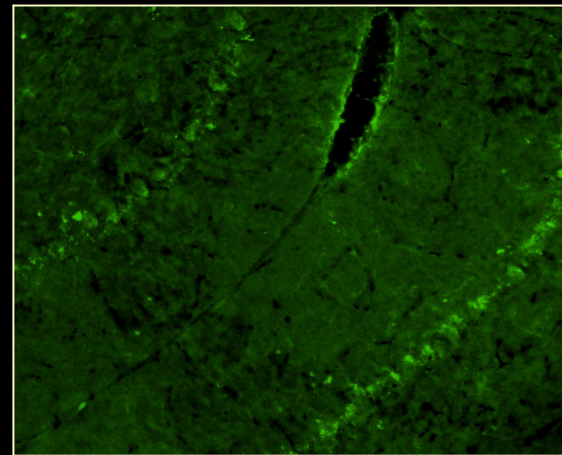
Design

- 3 primary antibodies tested:
 - 280, 714, 790
 - 3 concentrations: 1, 3, 10
 - Secondary AB tested at 1:300, 1: 1,000

BC
off



BC
on



Secondary only

38-13_25

790: 10
Cy2: 1:500

280
(1)

1: 1000

38-13: 24

38-13: 25

1: 300

38-13: 24

38-13: 25

280
(3)

1: 1000

X

38-13: 24

38-13: 25

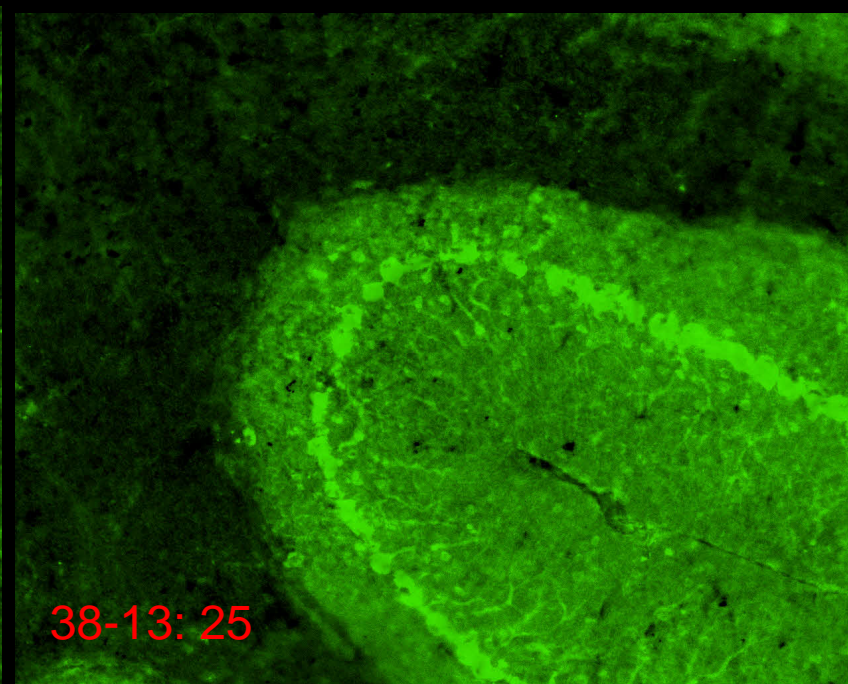
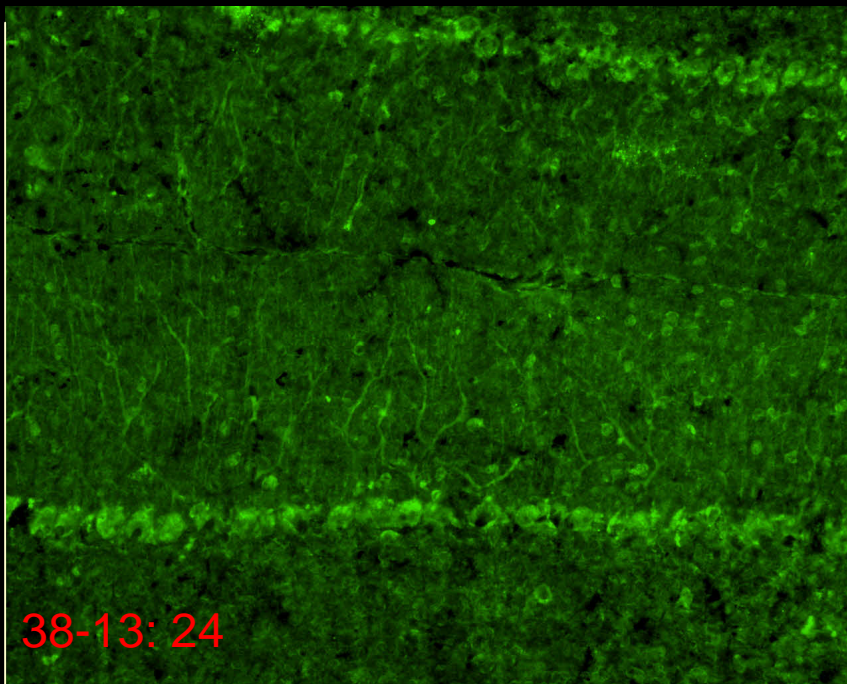
1: 300

38-13: 24

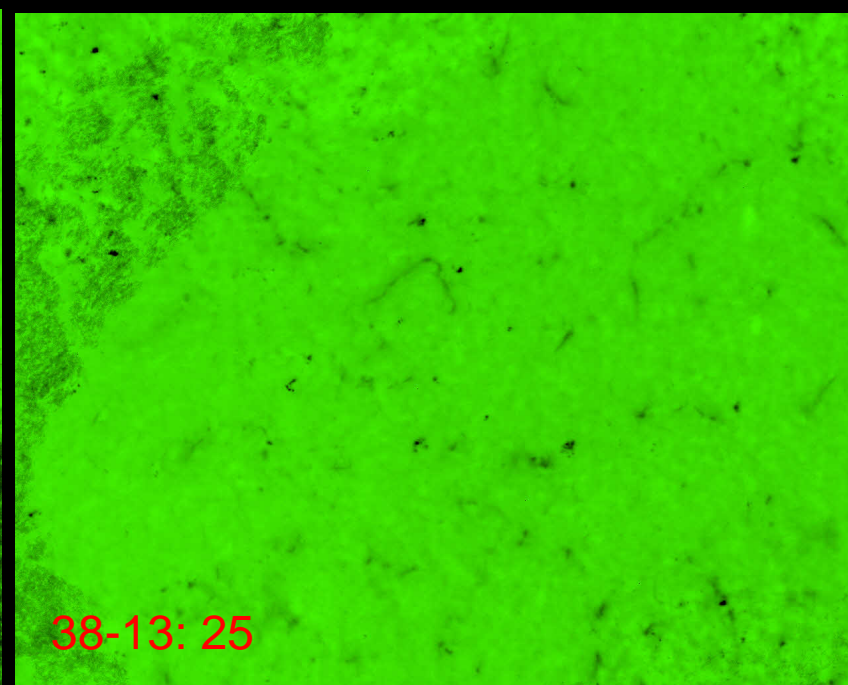
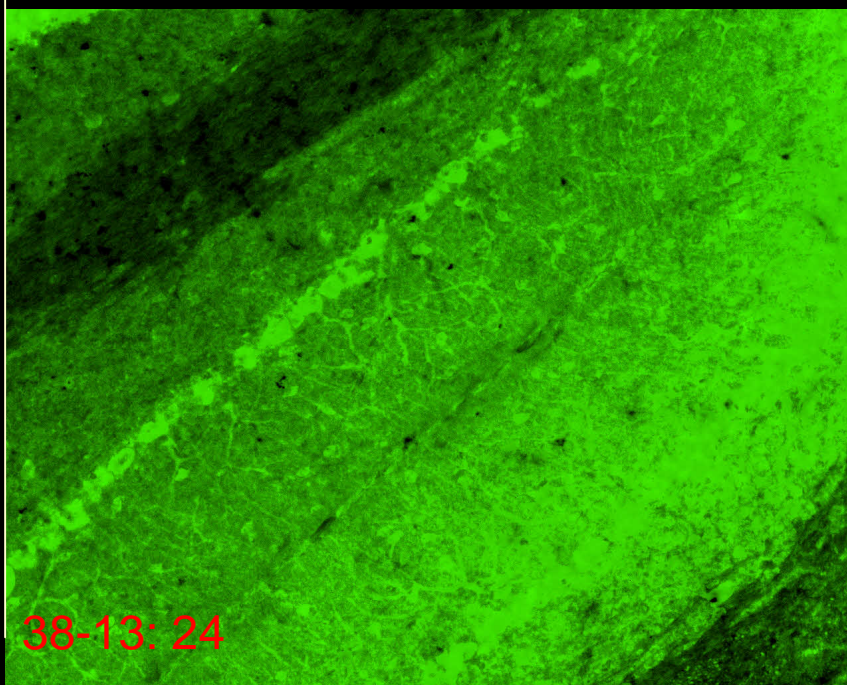
38-13: 25

280
(10)

1: 1000



1: 300



714
(1)

1: 1000

38-13: 24

38-13: 25

1: 300

38-13: 24

38-13: 25

X

714
(3)

1: 1000

X

38-13: 24

38-13: 25

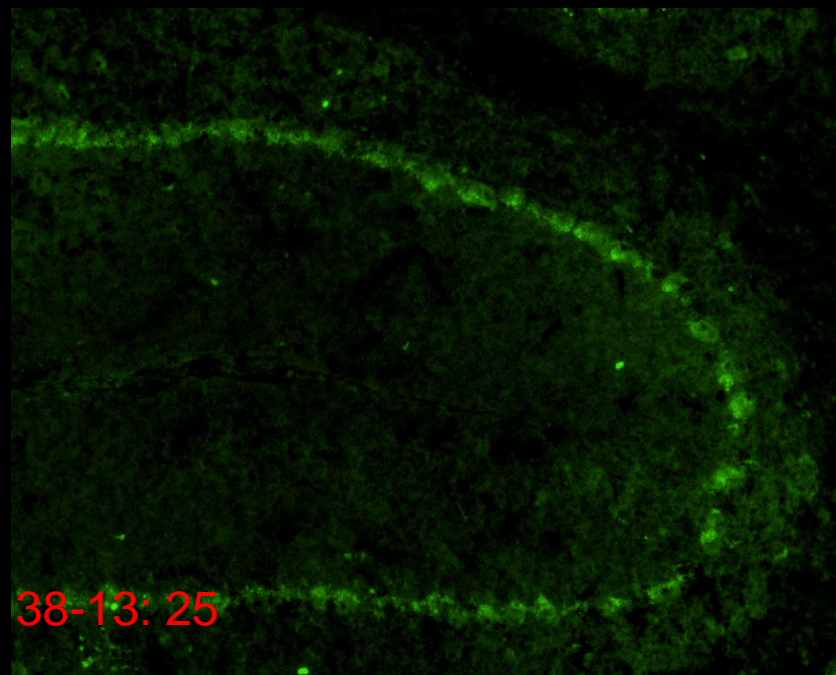
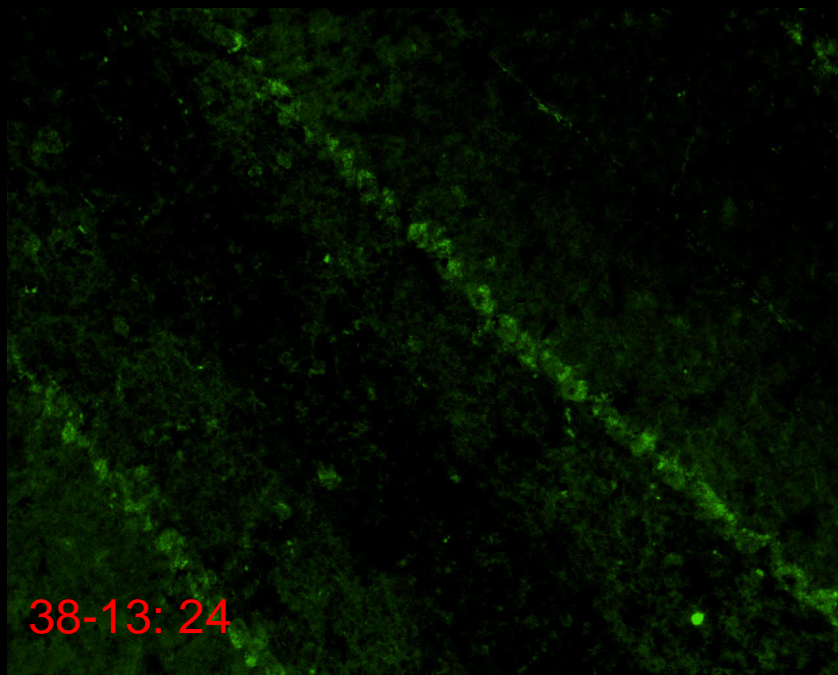
1: 300

38-13: 24

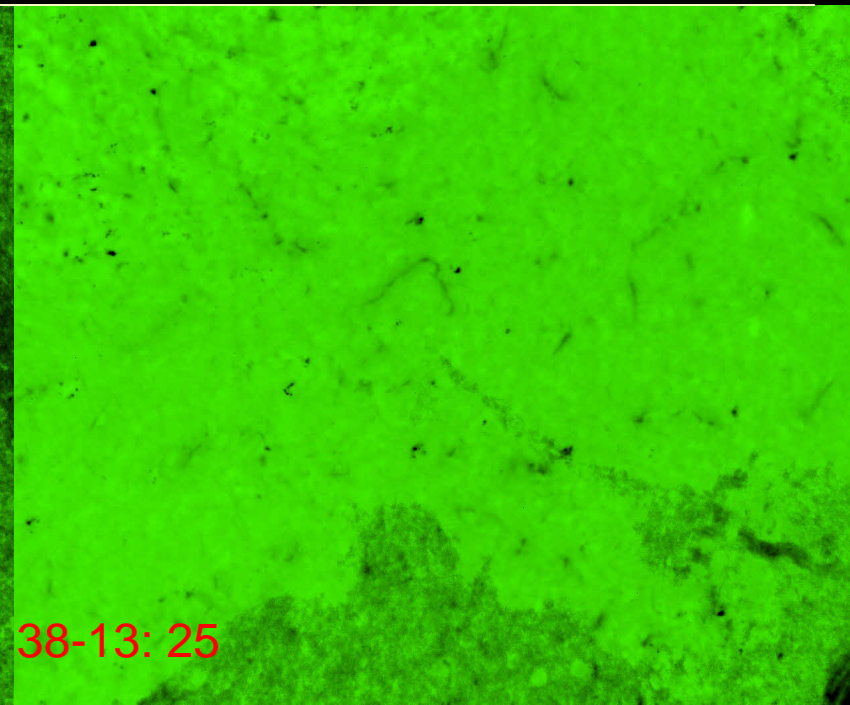
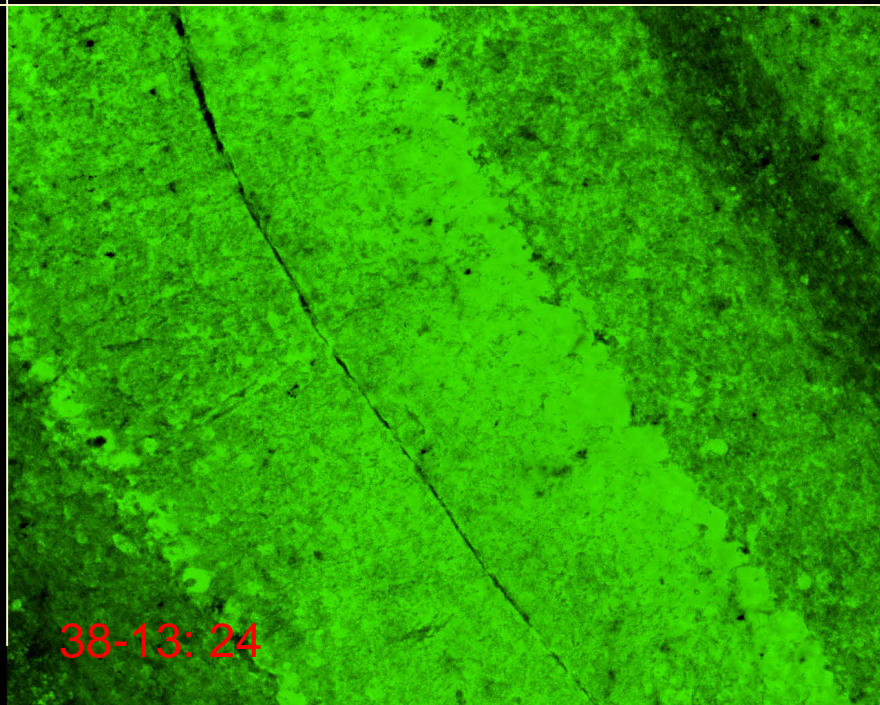
38-13: 25

714
(10)

1: 1000



1: 300



790
(1)

1: 1000

38-13: 24

38-13: 25

1: 300

38-13: 24

38-13: 25

790
(3)

1: 1000

38-13: 24

38-13: 25

1: 300

38-13: 24

38-13: 25

790
(10)

1: 1000

38-13: 24

38-13: 25

1: 300

X

38-13: 24

38-13: 25

Bench work

- Each cerebellum is halved: qPCR, WB, IHC
 - WB: comparing expression of ataxin protein between lines—more work to be done...
 - Thank you Sharan!

End